



SPARTAN BASIN MOUNT SOAP - MAINS



Installation  
& maintenance  
instructions.

## General Information

- Designed for indoor use only. Do not expose to elements of nature.
- All plumbing and electrical connection must be made in accordance with AUS / NZ standards.
- Designed for the use of liquid type soap, refillable tank (1 litre).

## Warnings

- Read all instructions before attempting to install this system. It is recommended a qualified & registered plumber completes the install.

# Operating Instructions and Parts Manual

Please read carefully before attempting to assemble, install, operate or maintain the product described. Protect yourself and others by observing all safety information. Failure to comply with instructions could result in personal injury and/or property damage. Retain instructions for future reference.

## Sanela Spartan Basin Mount Sensor Soap

Sensor activated soap tap with refillable 1litre tank, intended for liquid soap. Stainless steel construction. Complete the look with matching tapware.

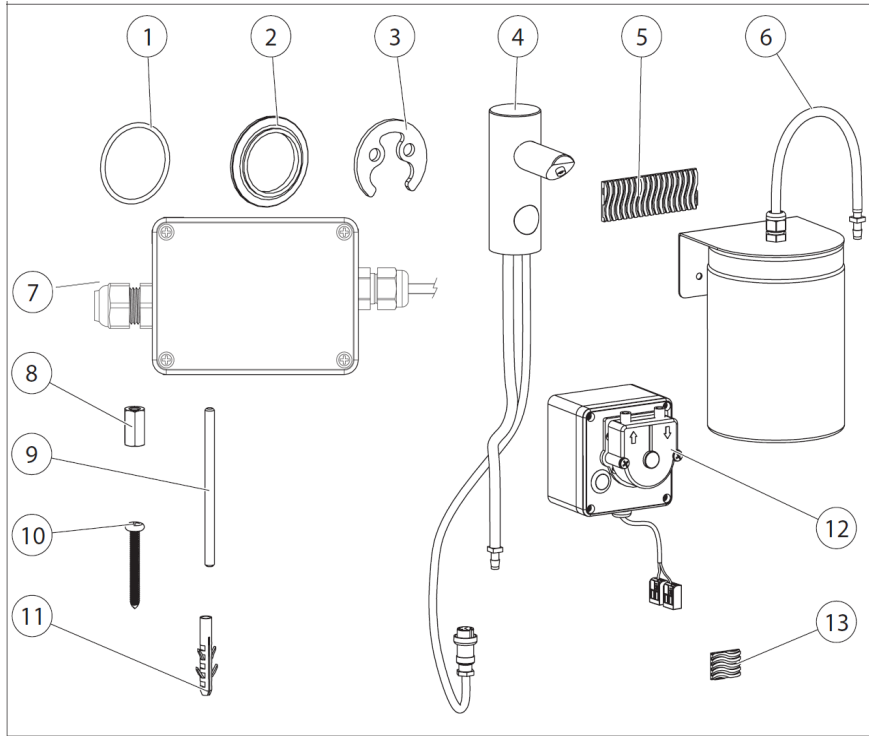
### Specifications

Finish	Stainless steel construction
Power Supply	Mains - 230V AC, 50 Hz (input) - 24V (output)
Control	Infrared sensing
Operating Voltage	24V DC
Active Range	0.11 – 0.15m START/STOP program 1.3 – 13secs
Dispense Type	Refillable liquid soap (1 litre)
Recommended Soap Viscosity	10 mPa*s – 5000 mPa*s (don't use chemical solvents and disinfectant)
Dimensions	Height 109mm, Depth 92mm, Tap Ø 40mm, Hole 32-34mm, Nosing 69mm, Discharge height 75mm
Warranty	24 Months

### Planning

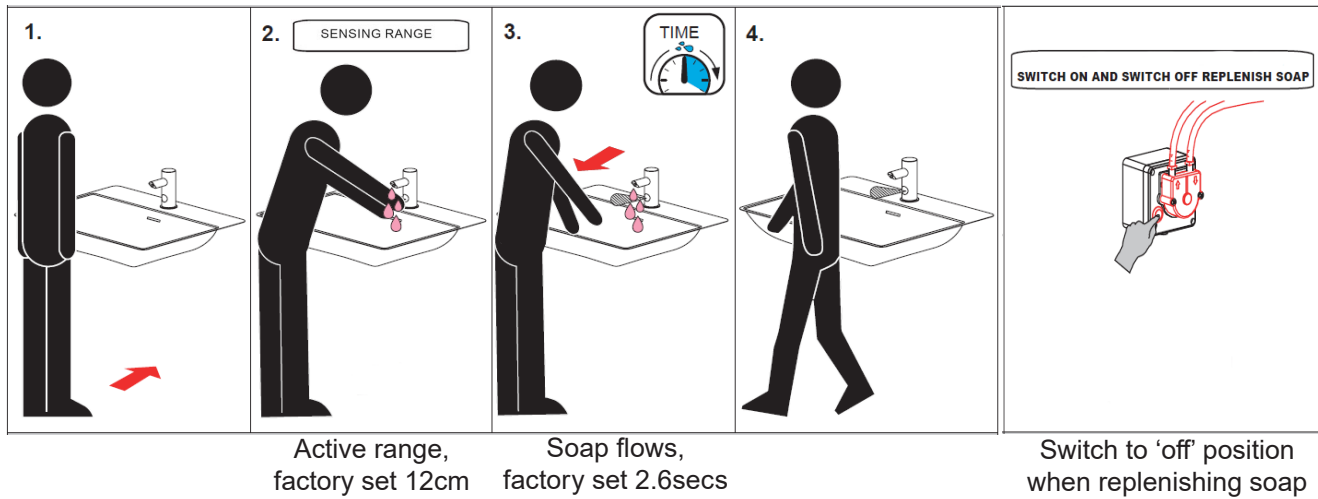
- Soap tap and peristaltic pump to be installed at a maximum vertical distance of 400mm
- Soap canister and peristaltic pump to be installed at a maximum distance apart of 150mm
- Peristaltic pump can be located above or beneath soap tap
- Ensure soap canister is accessible for ease of refilling
- Recommended hole size in basin 32-34mm and a minimum distance of 30mm from the wall

# Components



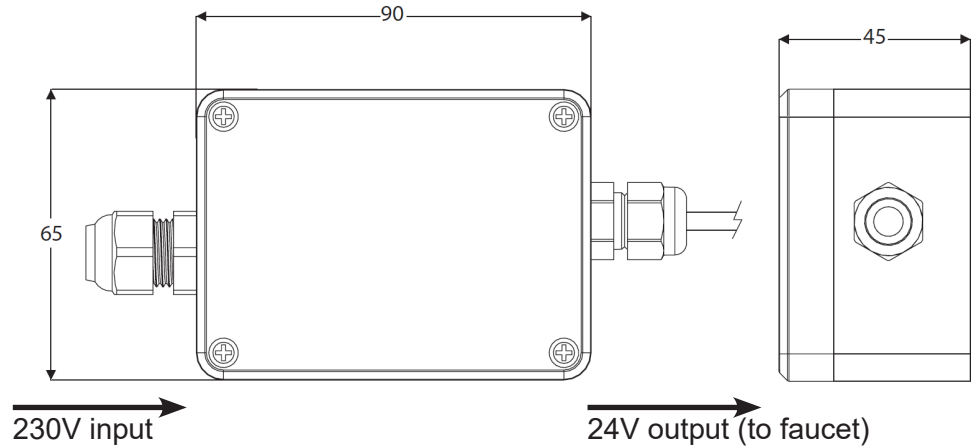
1	Seal / O ring
2	Mounting plate (top)
3	Mounting plate (bottom)
4	Soap tap
5	Velcro tape (large)
6	Soap canister
7	Power transformer
8	Hex nut x 2
9	Mounting screw x2
10	Screw x 2
11	Dry wall anchor x2
12	Peristaltic pump
13	Velcro tape (small)

# Standard Functions



# External Power Supply Installation

Input	230V / 50 Hz
Output	24 V DC
IP rating	IP 55
Operating temperature	5°C - 40°C
Rated power	10W



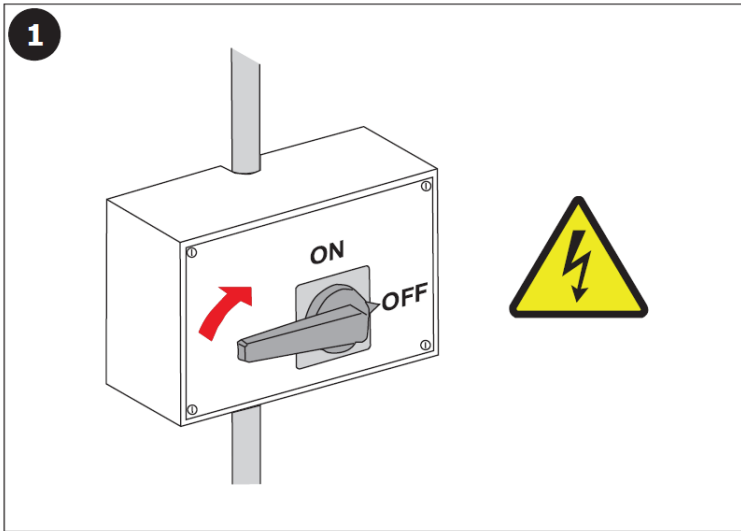
## Important

To be installed in accordance with all NZ electrical regulations. It must be carried out by a qualified professional.

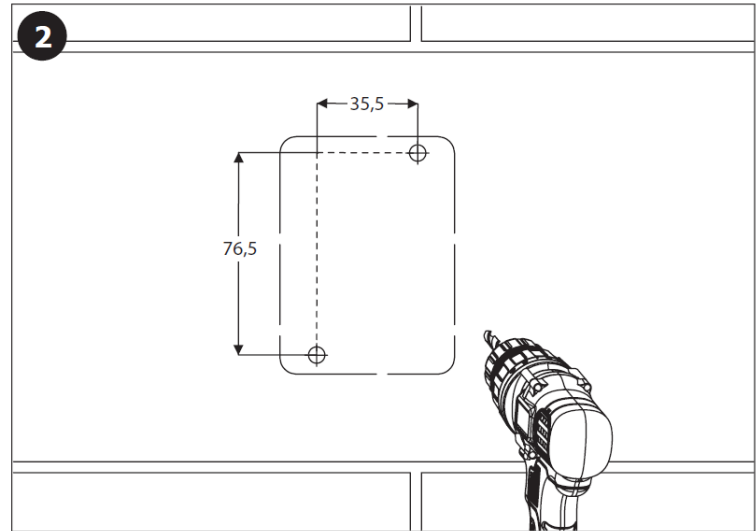
Positioning of the mounting box should be 500mm from the floor and consider:

1. Moisture ingress due to plumbing fault
2. Ongoing maintenance and accessibility

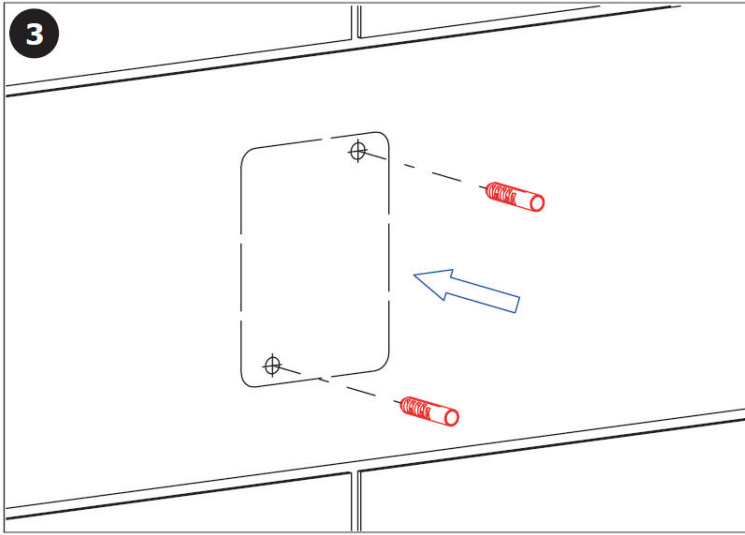
The mounting box can be surface mounted or within the service or ceiling cavity.



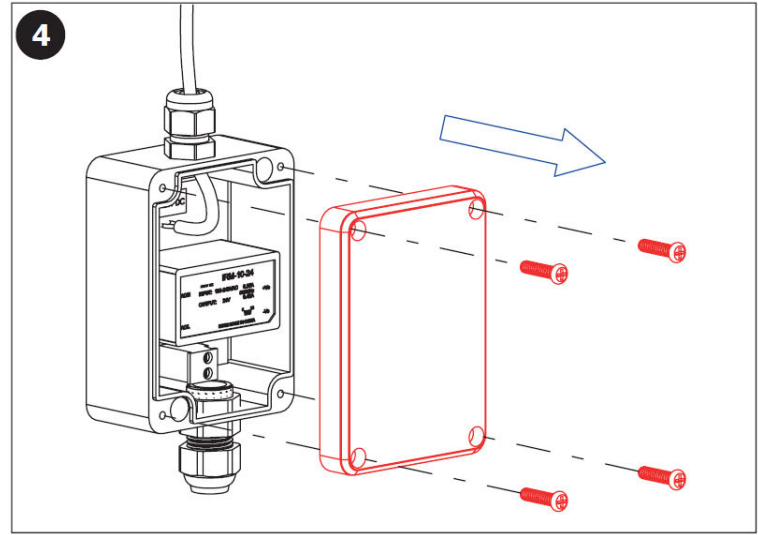
1 Ensure mains power supply is off



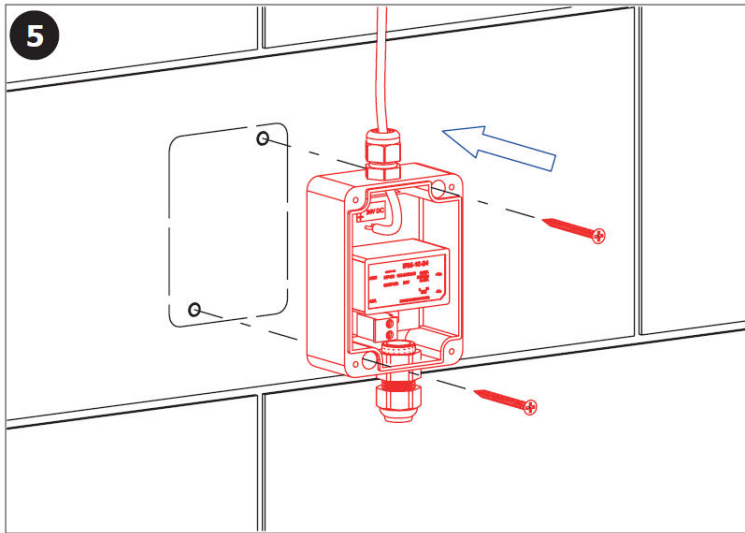
2 Mark mounting point(s) on surface



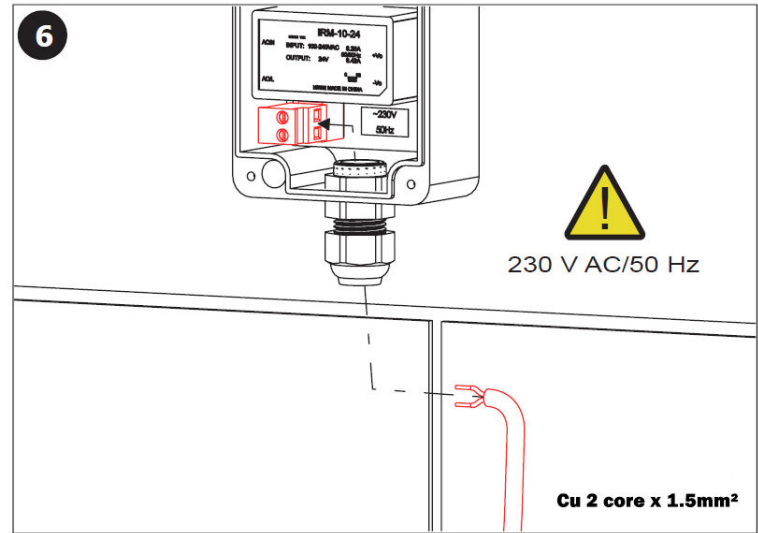
3 Drill and insert appropriate wall anchors if required



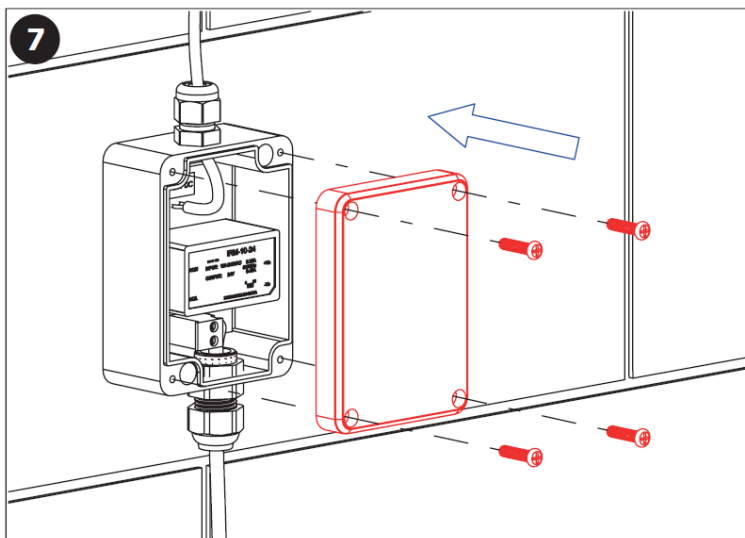
4 Remove cover from mounting box



5 Fix mounting box to wall



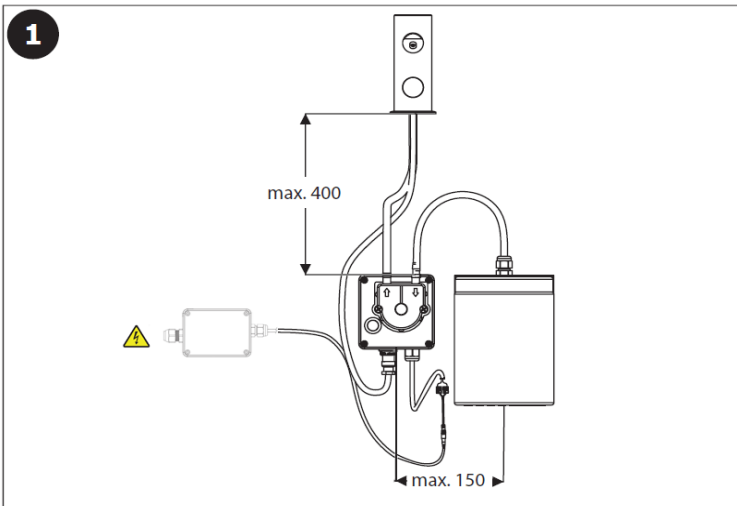
6 Pass mains (230V) power supply into mounting box via grommet and terminate accordingly



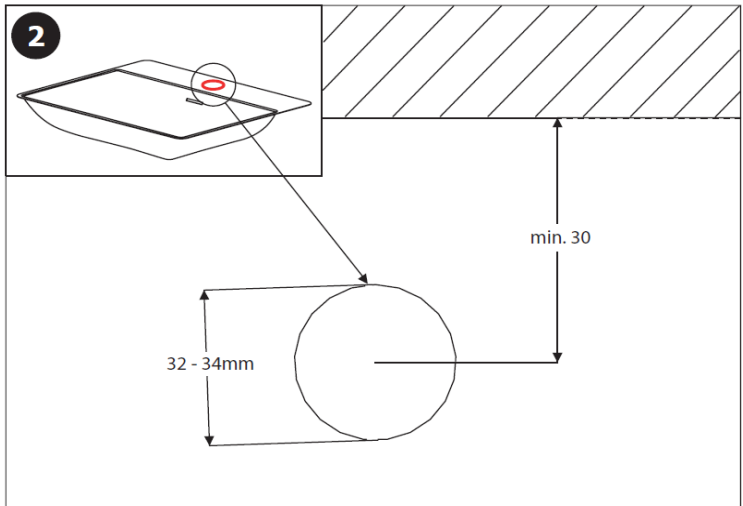
7 Reinstall cover of mounting box and ensure sealed. Tighten grommet to ensure snug around cables

**Note:** Power supply should be secured via current breaker before the external supply (not included)

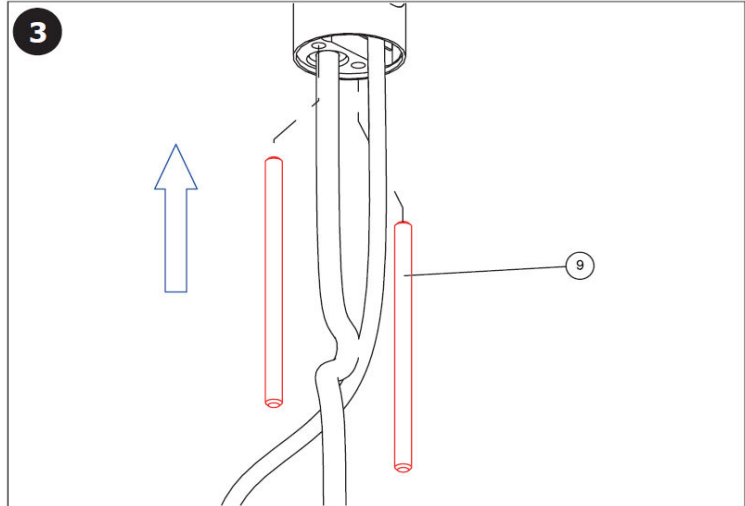
# Faucet Installation



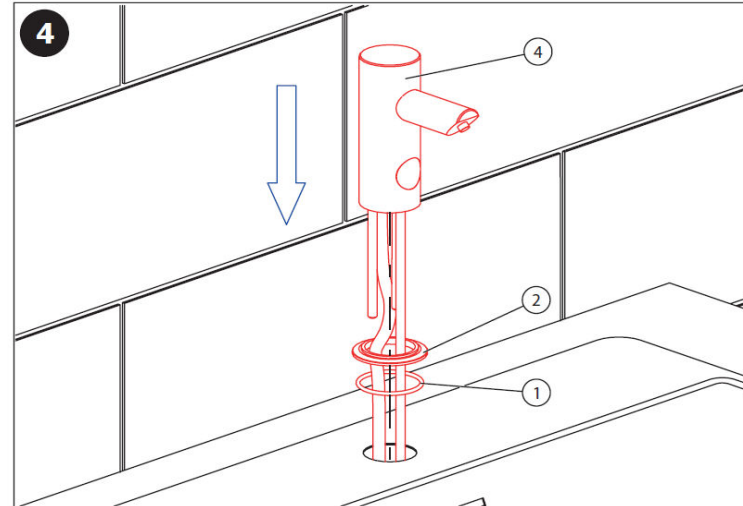
Typical set up: Soap tap to pump distance 400mm max, Pump to tank distance 150mm max



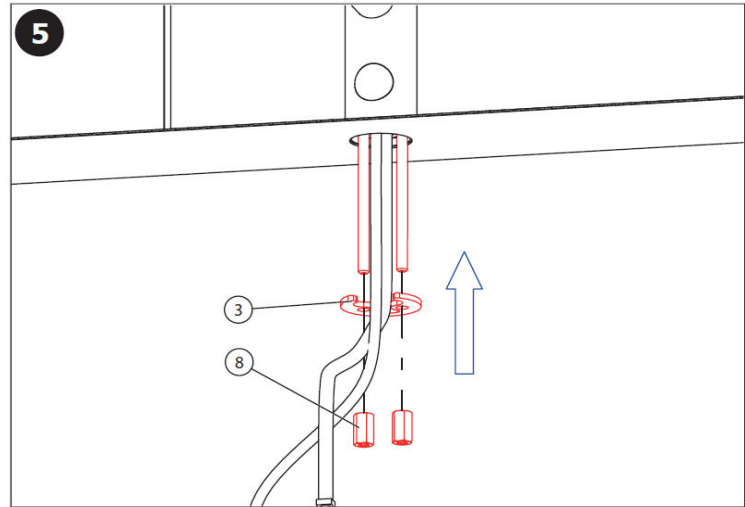
Recommended hole size 32-34mm, and a minimum of 30mm from the wall



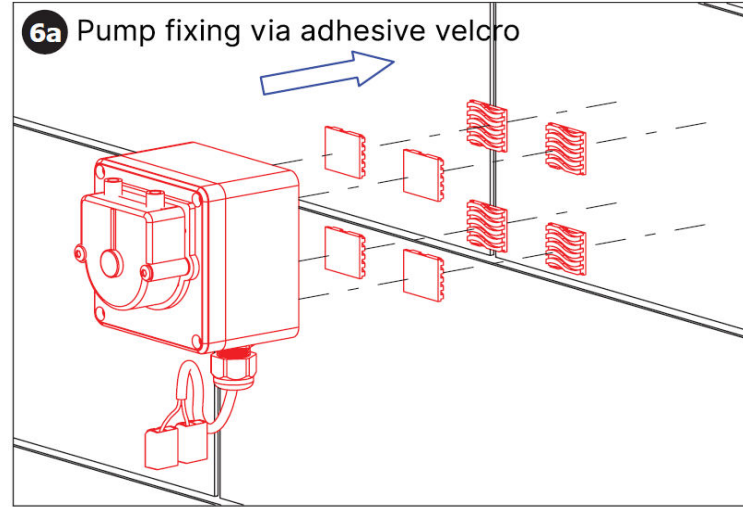
Fit mounting screw (x 2) into base of faucet



Fit stainless mounting plate top (2) and seal / o ring (1). Pass mounting screws, hose and electrical connections through vanity



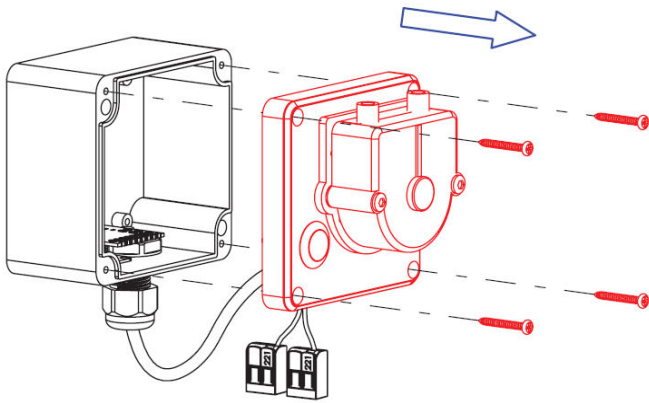
Fit mounting plate (bottom) and hex nuts



Option A: Clean wall with alcohol, then apply velcro tape (small) adhesive to wall first, then velcro to velcro. Lastly, expose opposite adhesive side and press pump firmly to achieve a strong hold

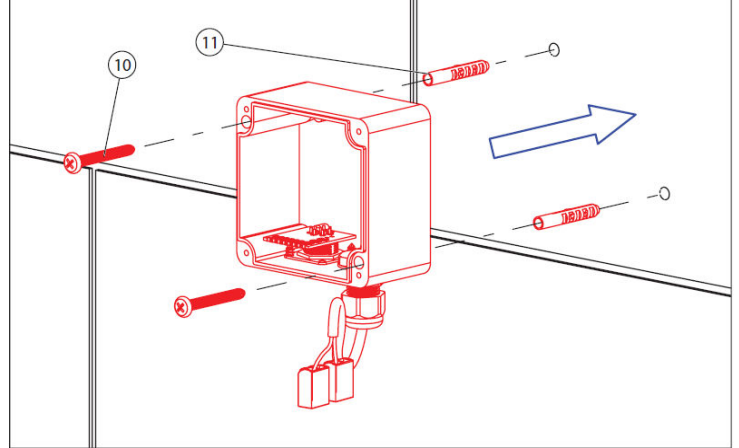


**6b1** Fix pump directly to the wall



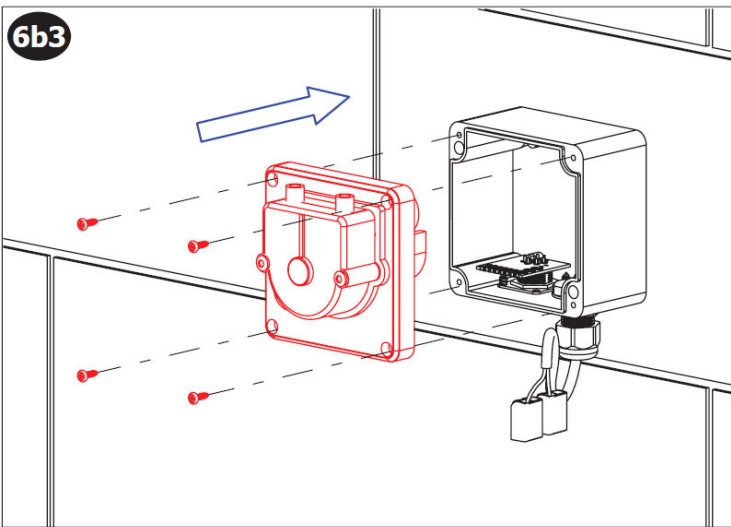
Option B: Remove cover from pump

**6b2**



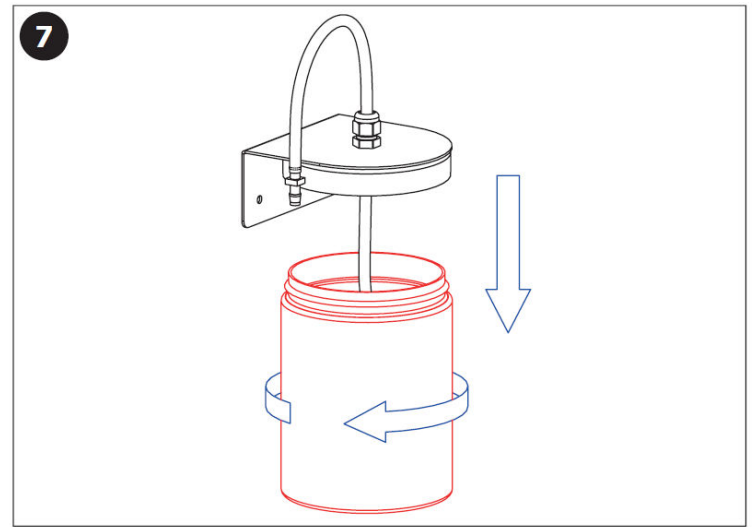
Mark mounting points on surface, drill and insert appropriate wall anchors if required, fix mounting box to wall

**6b3**



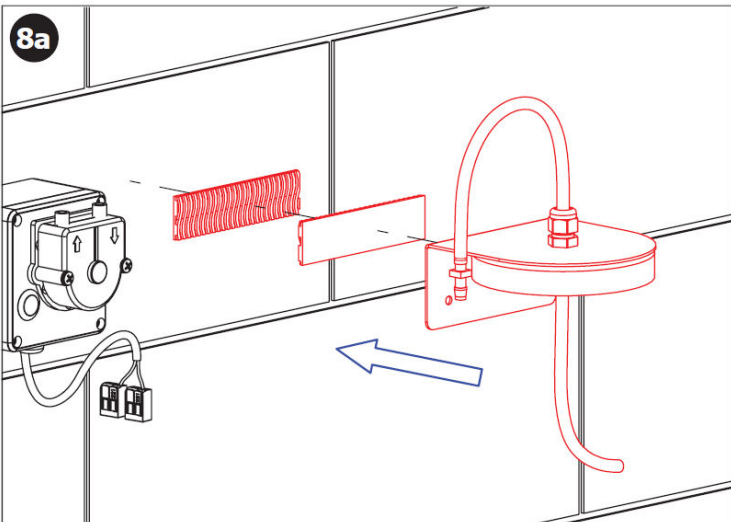
Reinstall cover of pump and ensure sealed

**7**



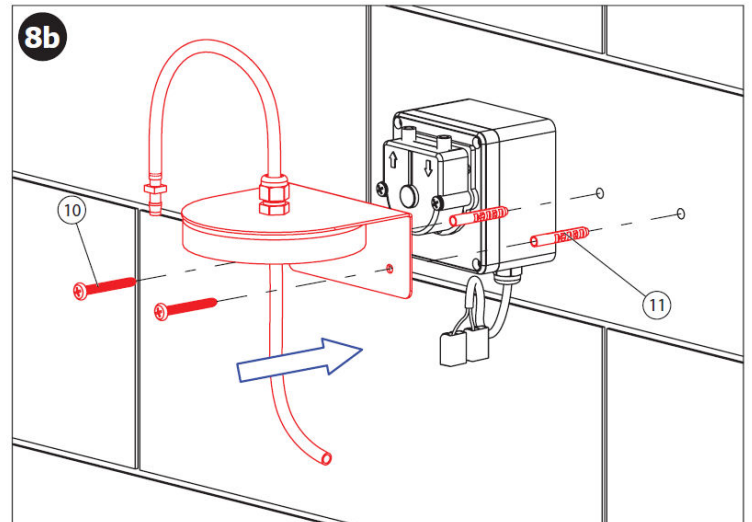
Unscrew soap canister from top plate

**8a**



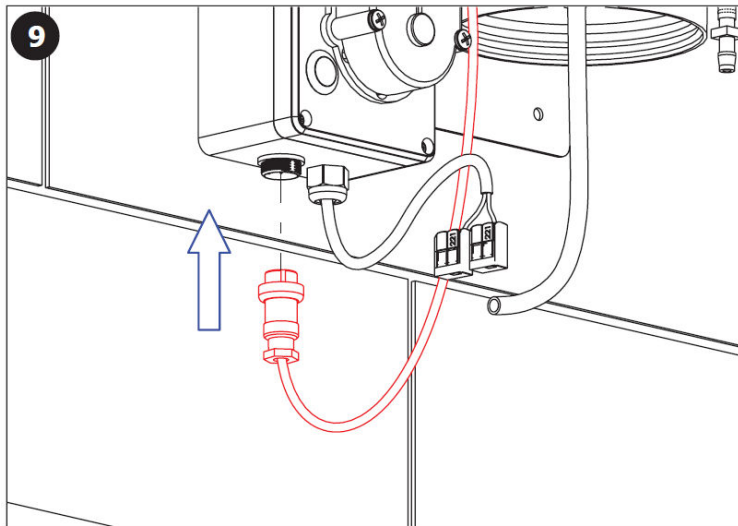
Option A: Fix soap canister top plate via adhesive velcro (large)

**8b**

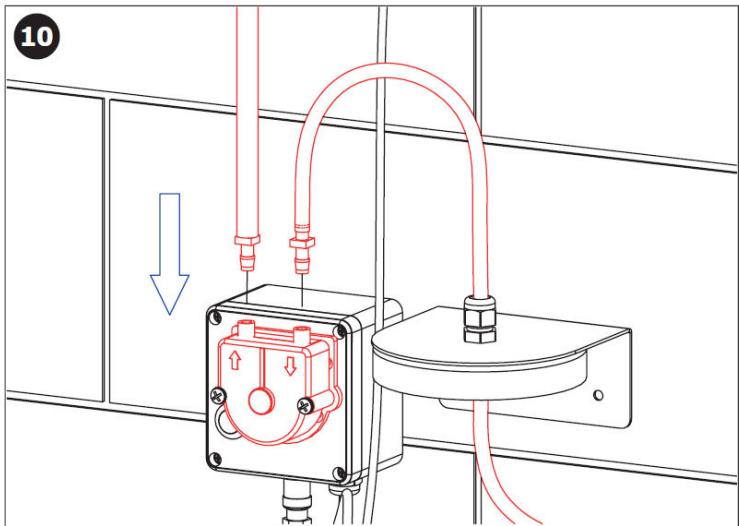


Option B: Fix soap canister top plate via screwing into the wall, using wall anchors if required

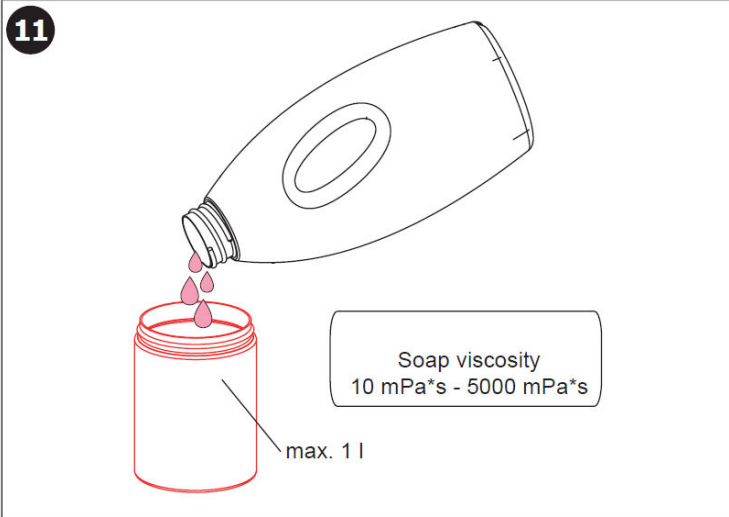




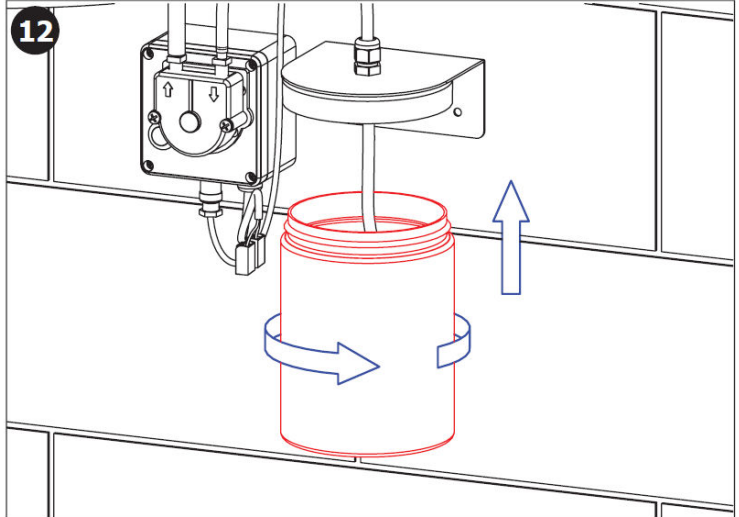
9 Connect electronics from soap tap into bottom socket of pump. Carefully align pins and tighten safety nut.



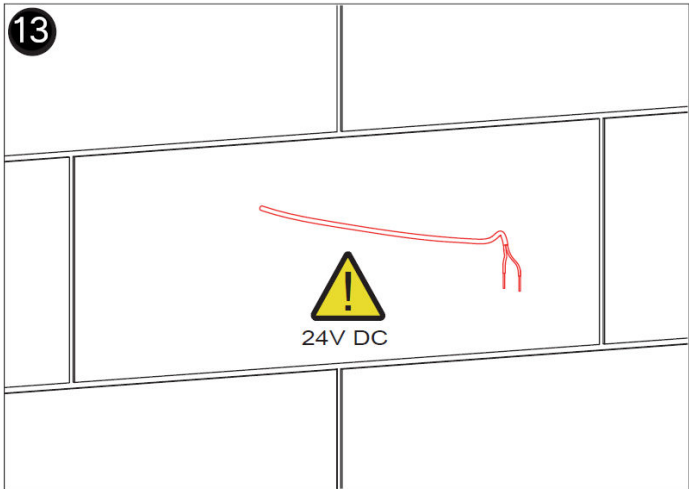
10 Connect soap canister and faucet to pump. Ensure to follow diagram regarding inward and outward direction



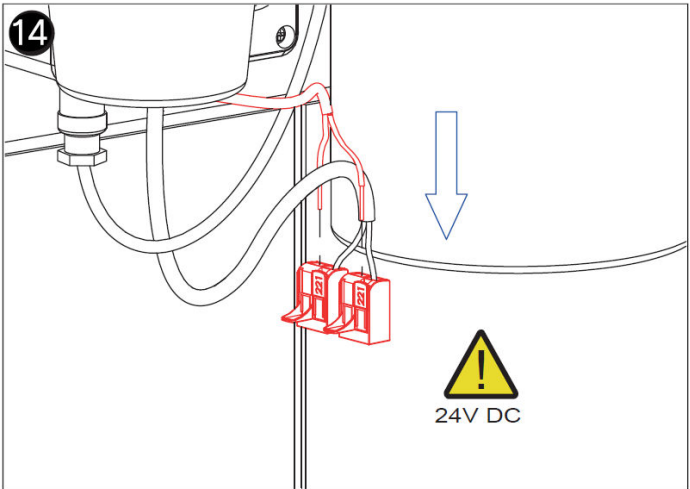
11 Fill soap canister with liquid soap (only)



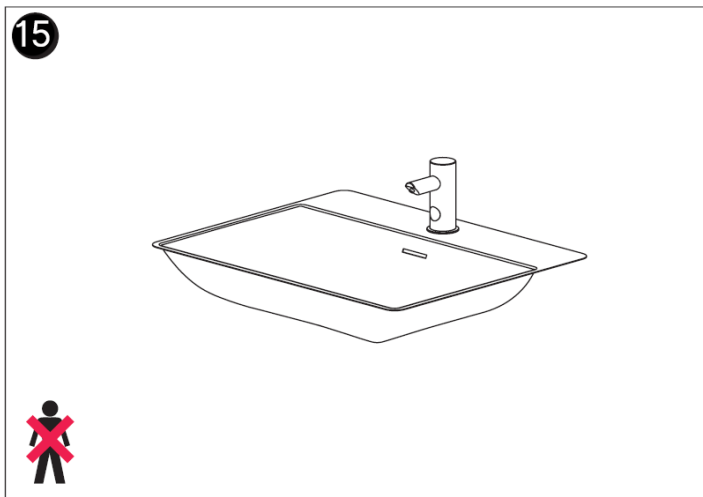
12 Screw soap canister into top plate



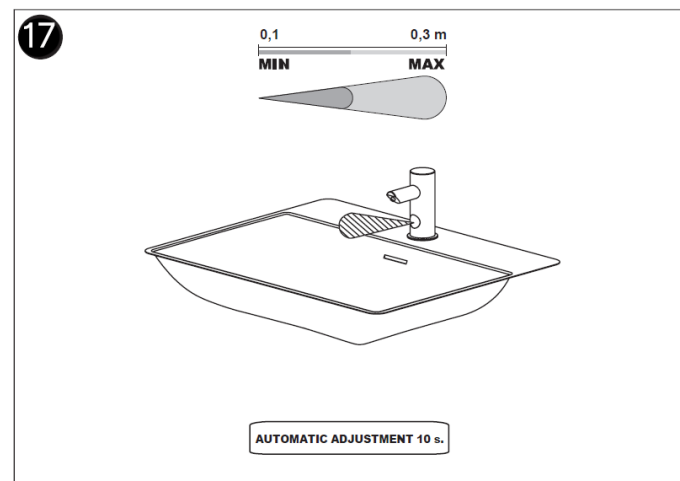
13 Pass power connection through wall if applicable



14 Connect external power (24V outlet) supply to wago connectors on faucet (Note polarity: brown to brown, white to white)



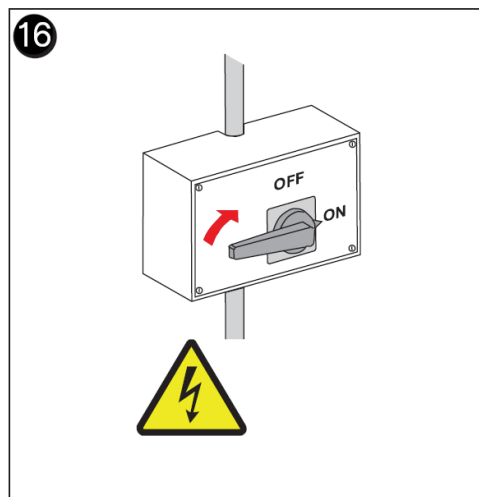
Do not come within active range



Once power turned on, faucet will automatically adjust sensing range during first 10 seconds. The LED on sensor will continually flash, do not come in active range during this time

## Important

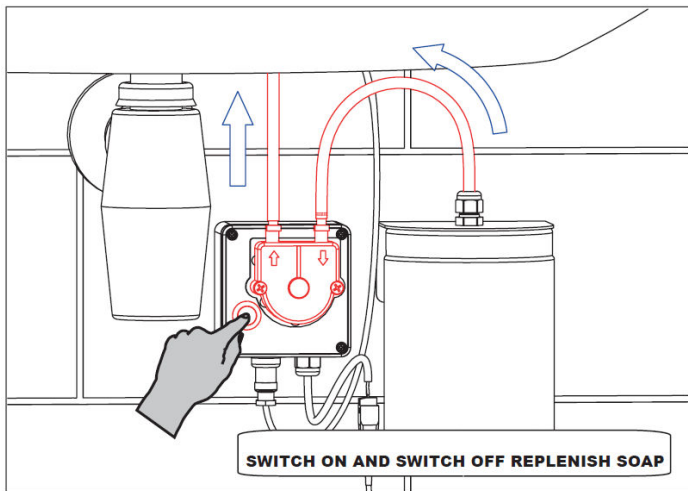
- Intended for liquid soap only. No particles or granules are permitted within soap, this may cause damage to the pump and/or possible blockages.
- The sensor of the faucet must not be obstructed.
- Avoid positioning reflective objects or surfaces in front of the faucet sensor. This can cause false activation i.e. mirrors opposite faucet.
- All plumbing and electrical installation must be carried out by a qualified person and in accordance with applicable codes and regulations.



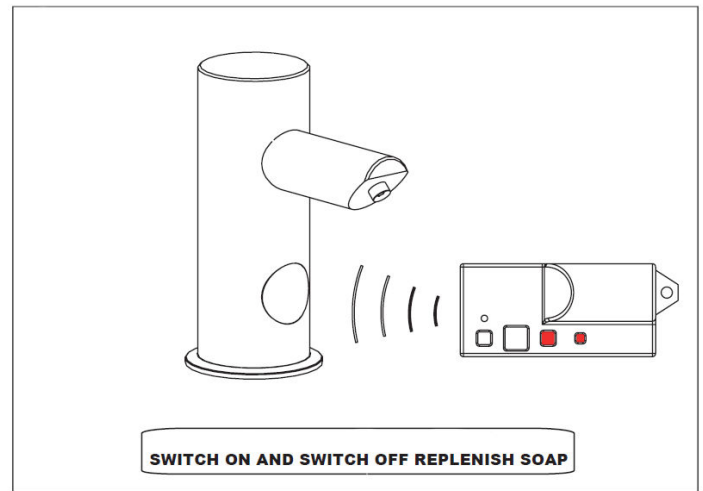
Turn power supply on. It is necessary, for the proper function, to keep the unit under constant voltage (don't connect the power supply unit behind the switch into the light circuit)

# Maintenance

- It is recommended that the pump and all filters be inspected for foreign debris and cleaned annually (more frequently if necessary)
- Clean faucet regularly using soapy water and a soft cloth or wet sponge
- DO NOT clean faucet with any abrasive material or chlorine/acid based cleaning product. This may damage the filter of the infrared sensor and/or the finishing of the faucet.



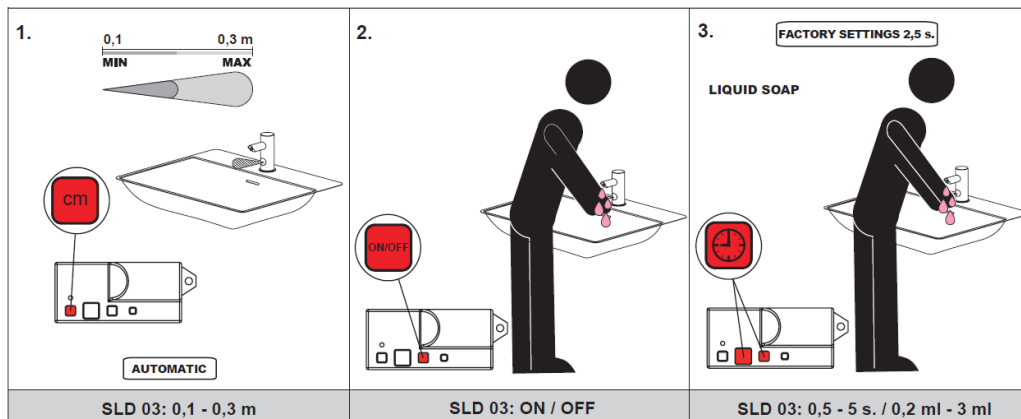
On/off switch located at the pump for replenishing soap tank



Additional remote is available for operating on/off function

## Note:

If you require to modify any of the factory settings please request the Sanela remote SLD03.



Activation range

Sensing on / off

Discharge duration

# Troubleshooting

Symptom	Possible Cause	Corrective Action
No soap flow - is LED on sensor flashing red when hands are within active range?	<ul style="list-style-type: none"> <li>a. Soap supply low</li> <li>b. Blocked soap pipes</li> <li>c. Is pump activating?</li> <li>d. Faulty pump</li> </ul>	<ul style="list-style-type: none"> <li>a. Replenish soap</li> <li>b. Flush soap pipes</li> <li>c. Check all hose connections, re-prime using switch on pump</li> <li>d. Replace pump</li> </ul>
No soap flow - LED on sensor NOT flashing when hands are within active range.	<ul style="list-style-type: none"> <li>a. Power supply</li> <li>b. Power connections to faucet (wago connectors)</li> <li>c. IR sensor damaged</li> <li>d. Faulty IR sensor</li> </ul>	<ul style="list-style-type: none"> <li>a. Ensure power at source</li> <li>b. Check all connections and polarity</li> <li>c. Replace IR sensor filter</li> <li>d. Replace IR sensor</li> </ul>
Soap doesn't stop flowing	<ul style="list-style-type: none"> <li>a. Dirty IR sensor</li> <li>b. Obstruction in detection zone</li> <li>c. Water drop on sensor eye</li> <li>d. Ghost sensing due to reflection</li> </ul>	<ul style="list-style-type: none"> <li>a. Clean IR sensor</li> <li>b. Remove obstruction</li> <li>c. Wipe sensor</li> <li>d. Remove reflective surface or reposition</li> </ul>



# Supreme Comprehensive Warranty

Your Sanela Sensor Tap is fully guaranteed against defective materials and faulty workmanship commencing from the date of sale (according to SPL's records), subject to it being installed and maintained in accordance with the manufacturer's instructions.

SPL (2021) Limited warrants that should any part of the sensor tap fail within the given warranty period (24 months), it will be remedied by SPL. The tap should be returned to SPL (2021) Limited for all warranty claims. The cost of cartage will be payable by the customer.

Due to the significant variation in tradesmen's knowledge, experience, and productivity, labour charges will NOT be accepted unconditionally. We strongly recommend contacting our office for advice before proceeding with any warranty repairs.

This warranty excludes:

- Incorrect installation, or installation that does not specifically follow the installation guidelines supplied
- Defects arising from improper installation, or incorrect electrical supply where applicable
- Failure to follow manufacturer's maintenance instructions
- Damage/Failure resulting from:
  - the use of non-authorized parts
  - authorized parts not installed in accordance with the manufacturer's instructions
  - accidental damage, negligent use, misuse, vandalism, neglect
  - damage caused either directly or indirectly by external sources (incorrect power supply, natural disaster, or insect infestation)
- Water ingress caused by property maintenance or flooding
- Negligent cleaning practices (water ingress, harmful chemical etc)

*The above includes consequential damage to any other goods, furnishings, or property.*

- Normal wear and tear and consumable parts (batteries etc)
- This warranty does not displace any statutory warranty in relation to the dispenser but any liability of SPL (2021) Limited under any statutory warranty will be limited to a replacement or repair of the dispenser or payment of the cost of such replacement or repair at the sole discretion of SPL (2021) Limited

Note:

- Warranty only extends to products purchased and installed in New Zealand.
- Contamination or poor water quality is not covered by product warranty.
- Damage to solenoid caused by inadequate flushing or excess water pressure is not covered by the product warranty.

SPL Limited  
Cambridge 3434  
New Zealand

p. +64 7 823 5790  
e. office@splwashrooms.co.nz