

SUPREME

BA101



Installation
& maintenance
instructions.

General Safety Information

WARNING - TO REDUCE THE RISK OF FIRE, ELECTRIC SHOCK OR INJURY TO PERSONS, OBSERVE THE FOLLOWING:

- Failure to disconnect the power source before installation can result in serious injury or death from electric shock. Always disconnect the power source before servicing or installing the hand dryer.
- Fixed wiring is recommended for all installations. Wiring should emerge from the wall in the position marked on the mounting diagram. All fixed wiring should incorporate a switch or breaker with a contact separation of at least 3mm in all poles.
- SPL (2021) Ltd accepts no responsibility for any damage or injury to property or persons caused by improper, incorrect or unreasonable use or installation.
- Failure to properly ground this unit could result in severe electrical shock and/or death. This hand dryer must be properly grounded (Earthed) for safe operation. An identified ground connection point is supplied on the chassis of the hand dryer. We recommend GFCI protection in wet or damp locations or as required by local code.
- Risk of fire, personal injury or property damage are possible if local codes, or safety recommendations are not followed. Installation must be carried out by a qualified person in accordance with all local wiring regulations.
- If the supply cord is damaged, it must be replaced by the manufacturer, its service agent or similarly qualified persons in order to avoid a hazard.
- The instructions contained within the Mounting Template must be followed carefully when installing this unit. Failure to accurately follow the instructions may result in the incorrect operation of this unit, damage to property and/or personal injury.
- This appliance is not intended for use by persons (including children) with reduced physical, sensory or mental capabilities, or lack of experience and knowledge, unless they have been given supervision or instruction concerning use of the appliance by a person responsible for their safety.
- Do not insert objects into the air outlet, doing so can be hazardous and could result in electric shock.
- Do not obstruct the air inlets or outlets in any way.
- Do service your hand dryer at regular intervals.

Operating Instructions and Parts Manual

Please read carefully before attempting to assemble, install, operate or maintain the product described. Protect yourself and others by observing all safety information. Failure to comply with instructions could result in personal injury and/or property damage. Retain instructions for future reference.

Supreme BA101 Hand Dryer

Description:

The Supreme BA101 hand dryer is a heavy duty economical model. Due to make or break sensor activation, the BA101 can be installed over a bench or reflective surface. The unique drying chamber makes it easy for children to use.

Specifications

Cover	ABS, Polycarbonate blend
Motor	190W, 6670 rpm, tropic proofed
Power	2000W
Element	2000W, heavy duty, protected by a resettable cut out and thermal fuse
Fan	Glass reinforced nylon, delivery 4.25cu metres air per min
Rating	230 - 240V AC, 50Hz, IP22
Switching	Make or break infrared sensor
Sound Level	65 dBA @ 1.5m
Dimensions	320W x 325H x 190D mm
Weight	3.2kg
Warranty	The Supreme Comprehensive Hand Dryer Warranty 24 Month Limited Warranty
Standards	Complies with New Zealand and Australian Standards

Planning

We suggest that one hand dryer be installed for every two hand basins.

The BA101 hand dryer is suitable for mounting over bench tops or reflective surfaces.

When positioning dryers take note of traffic flows in the washroom, also be aware of obstruction doors, cabinets etc.

Recommended Mounting Heights

From Floor to Dryer Bottom Edge:

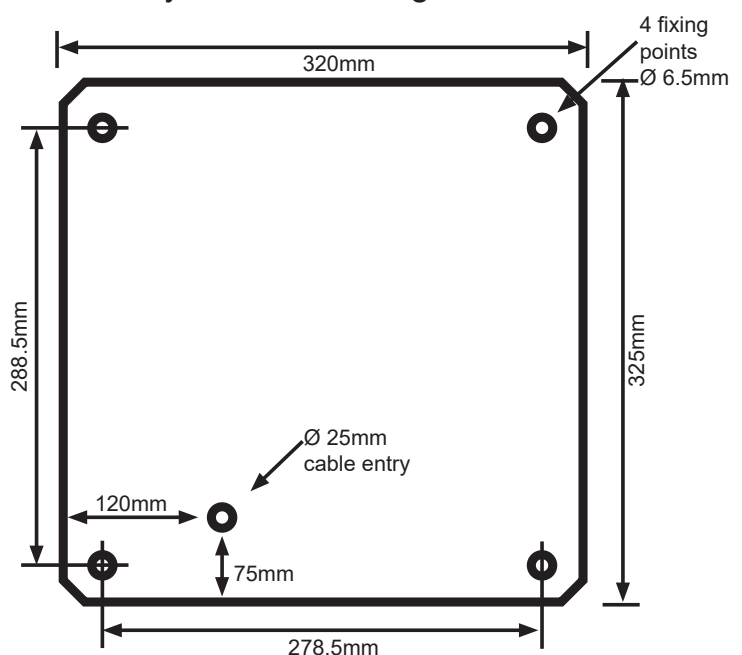
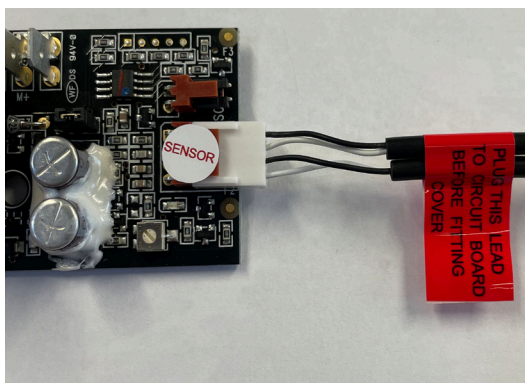
Men's washroom	1100mm
Ladies' washroom	1050mm
Children's washroom 13-17yr	1000mm
Children's washroom 10-13yrs	950mm
Children's washroom 7-10yrs	900mm
Children's washroom 4-7yrs	800mm
Disabled Person's	950mm

Installation Instructions

1. Disconnect power source.
 2. Remove the hand dryer cover by undoing the 2 x 6mm screws on the underside of the cover.
 3. Lift the lower part of the cover up approximately 12mm, then push cover upwards to unlatch the top of the cover from the back plate.
 4. Remove and discard test wires from terminal block before commencing installation.
 5. Position the back plate on wall as per the mounting diagram below.
- NOTE: Fixing to at least one stud is recommended where possible.
6. Fasten dryer to the wall using suitable fixings for the type of wall.
 7. To replace the cover firstly plug the sensor leads into the receptacle on the circuit board then latch the top of the cover over the base plate and ease the bottom of the cover into place.
 8. Replace the two 6mm stainless screws.

Supreme hand dryers have been tested and comply with all relevant Australian and New Zealand standards for electrical safety and electromagnetic interference.

NOTE: The sensor lead must be plugged into PCB before machine will start.



Maintenance Instructions

The following maintenance should be carried out six monthly in high traffic areas and twelve monthly in normal traffic areas:

1. Disconnect power supply and remove cover and sensor plug.
2. Carefully clean lint from inside of dryer paying particular attention to fan blades.
3. Unplug LED and receiver from lenses and wash cover in warm soapy water paying particular attention to lenses– dry thoroughly.

Your warantee could become void if the above is not performed at the specific intervals.

NOTE: For models incorporating a power cord, if the cord is damaged it must be replaced by the manufacturer, a service agent or similarly qualified persons in order to avoid a hazard.

Troubleshooting

Symptom	Corrective Action	Part required
Hand dryer runs for a few seconds and stops.	Isolate from the mains and replace the PCB and sensor.	Electronic upgrade - BA500PK-E3
Hand dryer is not heating.	Isolate from the mains and replace element.	Element 2kW - BA200-VE
When power is turned on the hand dryer runs by itself.	Remove cover and check the sensor lead is plugged into PCB.	

Supreme Hand Dryer Limited Warranty

Your Supreme hand dryer is fully guaranteed against defective materials and faulty workmanship commencing from the date of sale (according to SPL's records), subject to it being installed and maintained in accordance with the manufacturer's instructions.

SPL (2021) Limited warrants that should any part of the dryer fail within the given warranty period (2- 5 years product dependant), it will be remedied by SPL.

The dryer should be returned to SPL (2021) Limited for all warranty claims. The cost of cartage will be payable by the customer.

Due to the significant variation in tradesmen's knowledge, experience, and productivity, labour charges will NOT be accepted unconditionally. We strongly recommend contacting our office for advice before proceeding with any warranty repairs.

This warranty excludes:

- Incorrect installation, or installation that does not specifically follow the installation guidelines supplied
- Defects arising from improper installation, or incorrect electrical supply where applicable
- Failure to follow manufacturer's maintenance instructions
- Damage/Failure resulting from:
 - the use of non-authorized parts
 - authorised parts not installed in accordance with the manufacturer's instructions
 - accidental damage, negligent use, misuse, vandalism, neglect
 - damage caused either directly or indirectly by external sources (power outages, power surges, incorrect power supply, natural disaster, or insect infestation)
- Water ingress caused by property maintenance or flooding
- Negligent cleaning practices (water ingress, harmful chemical etc)

The above includes consequential damage to any other goods, furnishings, or property.

- Normal wear and tear and consumable parts (HEPA filters, UV-C lamps, fuses, motor brushes etc)
- This warranty does not displace any statutory warranty in relation to the dryer but any liability of SPL (2021) Limited under any statutory warranty will be limited to a replacement or repair of the dryer or payment of the cost of such replacement or repair at the sole discretion of SPL (2021) Limited

SPL Limited
Cambridge 3434
New Zealand
p. +64 7 823 5790
e. office@splwashrooms.co.nz